

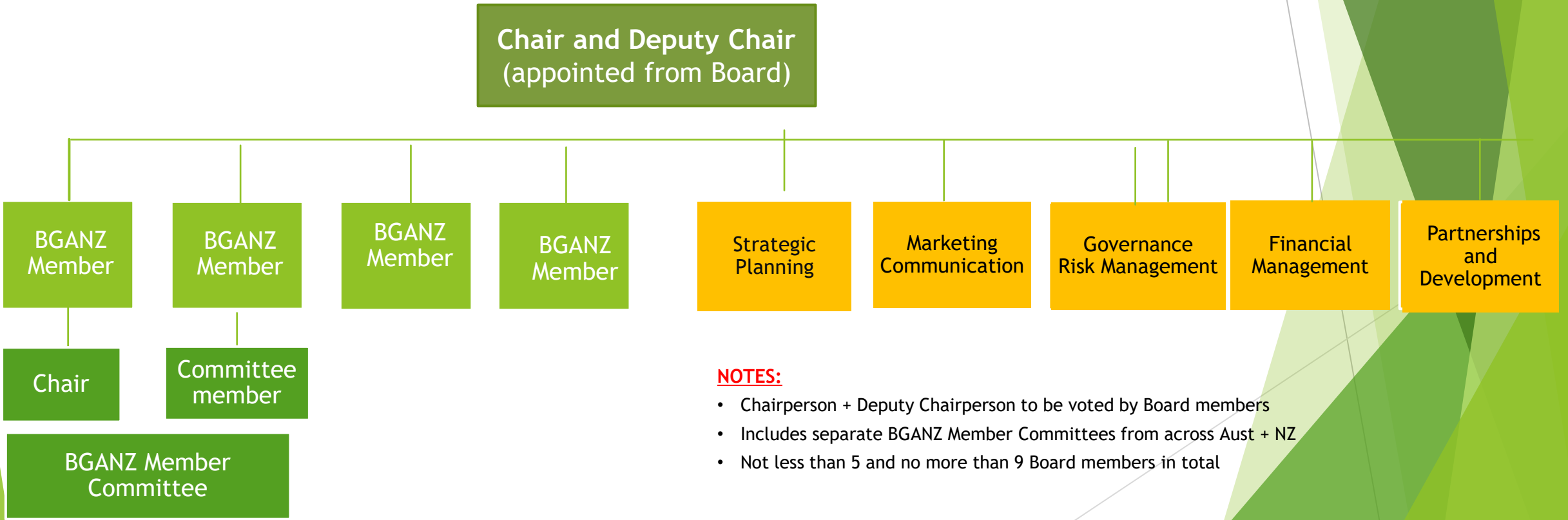


## BGANZ Proposed Board and Member Committee

# SKILLS BASED (up to 5, appointed) & BGANZ MEMBER (up to 4, elected)

Chairperson + Deputy Chairperson can be either appointed or elected director

\* At least one Board member to be from NZ and at least one Board member to be from Australia



**NOTES:**

- Chairperson + Deputy Chairperson to be voted by Board members
- Includes separate BGANZ Member Committees from across Aust + NZ
- Not less than 5 and no more than 9 Board members in total

**BGANZ Board**

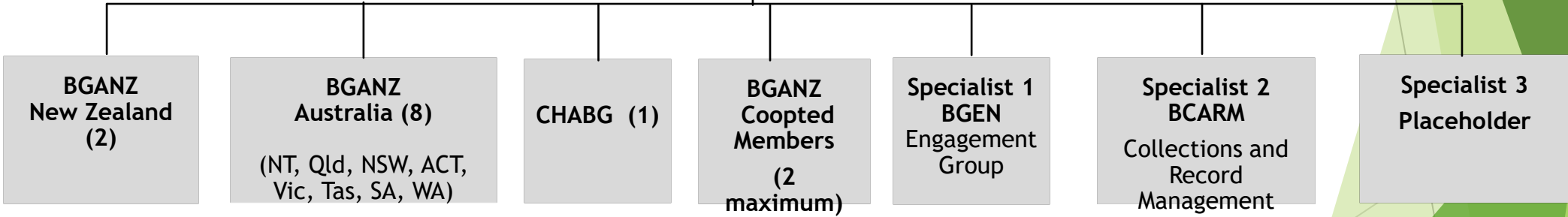
**BGANZ Member Committee**

**Regional Groups and Specialist Groups**

\*Each Regional and Specialist Group has a Convenor

\*Quarterly reports from Group Convenors to BGANZ Board via BGANZ Member Committee Chair

\* Annual gathering of Convenors with BGANZ Board



**Regional group and specialist group activity continues as is currently**