


OLIVEIATING THE PROBLEM

Weeding out the olive

John Siemon

Curator Manager

The Australian Botanic Garden, Mount Annan

 @siemonjohn



The Royal
BOTANIC GARDEN
Sydney



The Australian
BOTANIC GARDEN
Mount Annan



The Blue Mountains
BOTANIC GARDEN
Mount Tomah

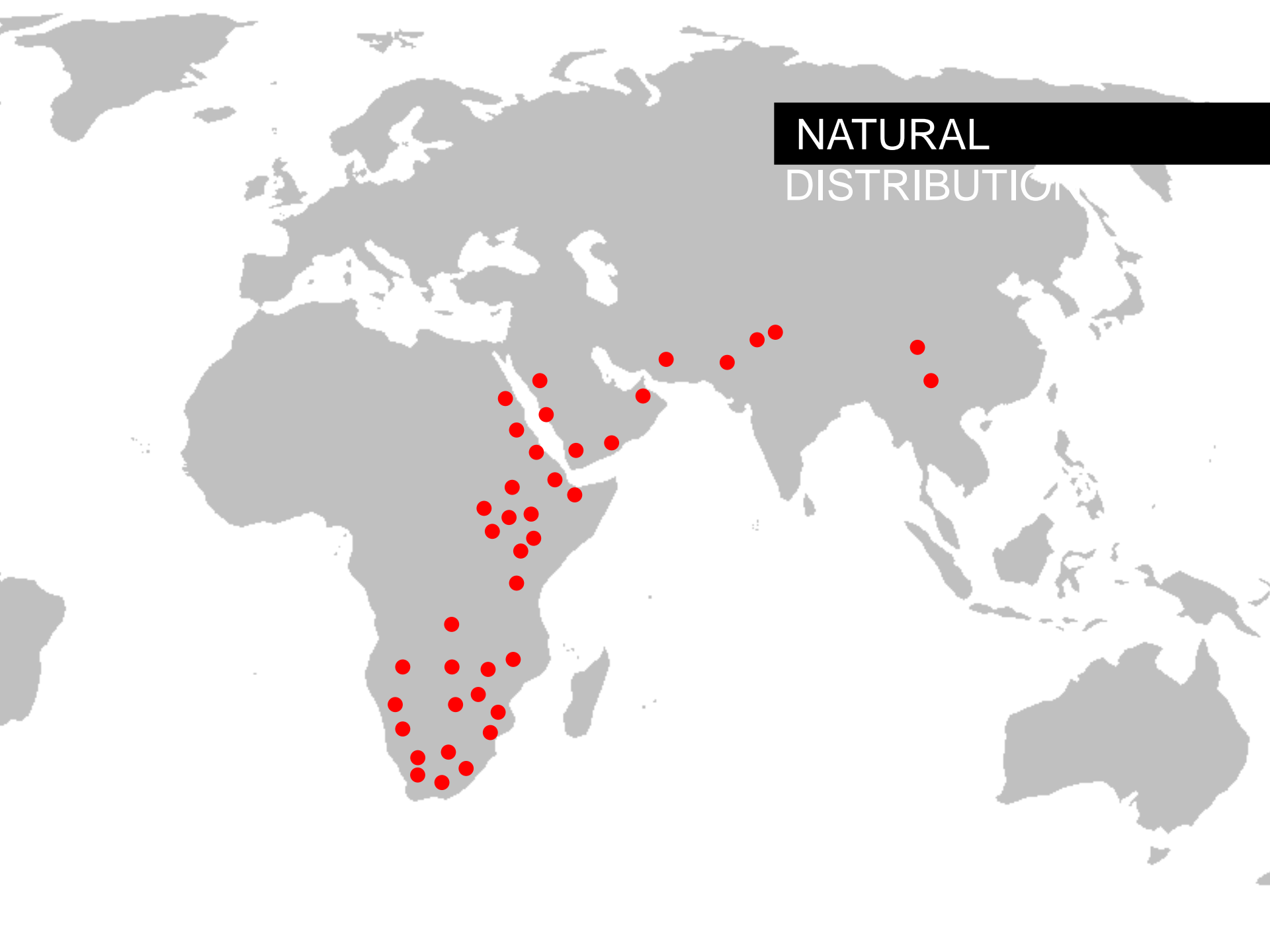


Centennial
Parklands





NATURAL DISTRIBUTION







European olive (*Olea europaea* ssp *europaea*)
Adelaide Hills, SA.

Source: Innocenzo Muzzalupo



African olive (*Olea europaea* ssp *cuspidata*)
western Sydney & Hunter Valley



A scenic view of Onkaparinga River National Park. In the foreground, a dirt path leads through dense green vegetation. A large, white-barked tree with a thick trunk and sprawling branches dominates the center-left of the frame. In the background, a red rock cliff face is visible, partially covered by trees and shrubs. The sky is overcast.

ONKAPARINGA RIVER NATIONAL PARK



MOUNT ANNAN - 1984



MOUNT ANNAN - 2004



An aerial photograph of a landscape, likely agricultural, with a complex pattern of red and green areas. The red areas are irregularly shaped and cover most of the frame. There are some green patches, particularly in the lower right and middle right. A black rectangular box is overlaid in the upper right corner, containing white text. The text is arranged in two lines: 'MAPING THE OLIVE' on the top line and 'IMPACT' on the bottom line. The font is a clean, sans-serif typeface.

MAPING THE OLIVE IMPACT





An aerial photograph of a dense, lush forest. The canopy is a mix of various shades of green, with some trees showing reddish-brown foliage. The forest appears to be on a hillside, with the terrain sloping downwards from the top left towards the bottom right. A black rectangular box is positioned in the upper right quadrant of the image, containing the text "ECOLOGICAL IMPACTS" in white, bold, sans-serif capital letters.

ECOLOGICAL IMPACTS

Endangered Ecological Community (EEC)	African Olive as % of EEC
Cumberland Plain Woodland	8.50%
Shale – Sandstone Transition Forest	1.60%
River flat Eucalypt Forest on Coastal Floodplains	6.50%
Western Sydney Dry Rainforest	25.00%
Moist Shale Woodland	28.50%



WHAT MAKES IT
A GREAT WEED?





WEED ECOLOGY



FIRE RESPONSE



SEED
LONGEVITY





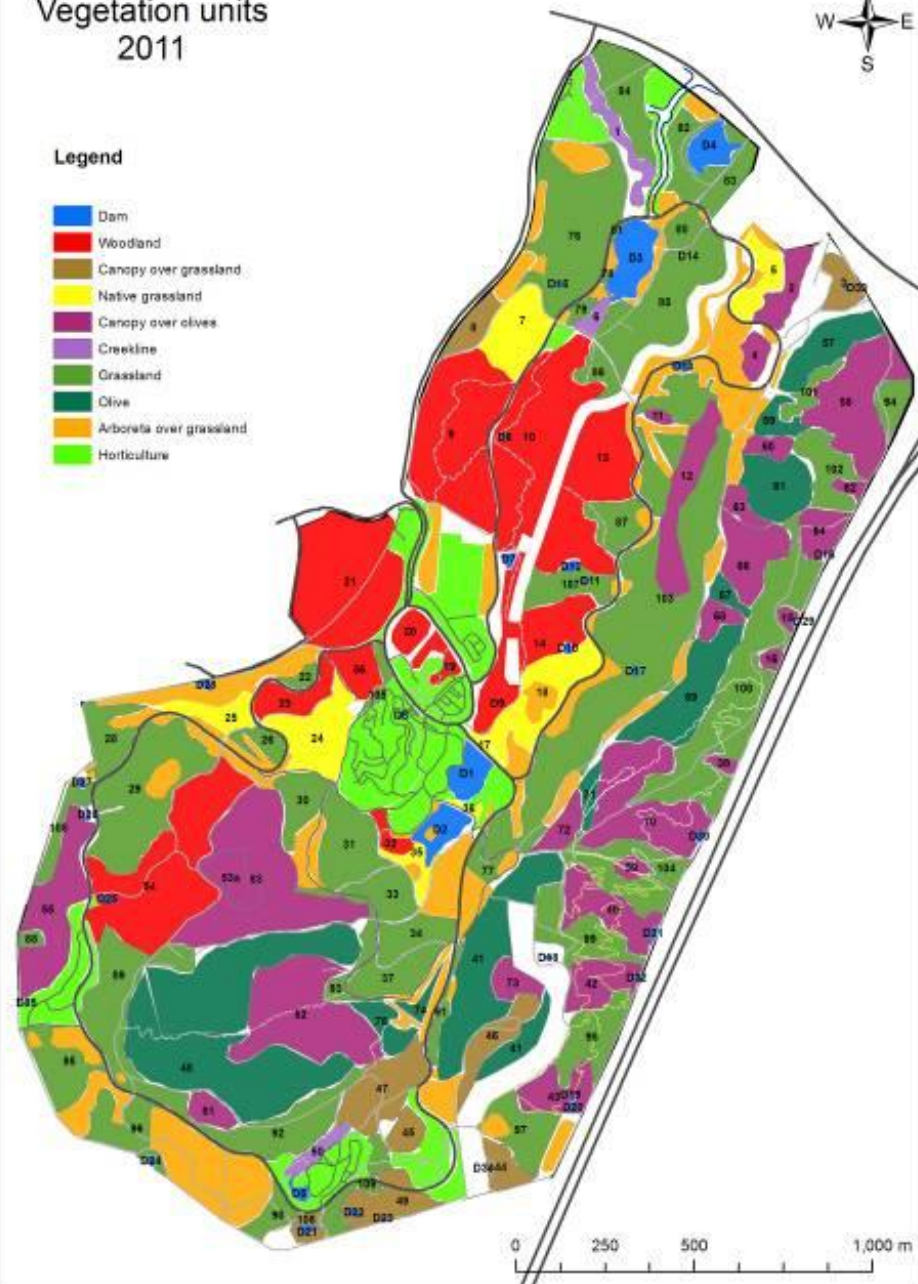




Vegetation units 2011

Legend

- Dam
- Woodland
- Canopy over grassland
- Native grassland
- Canopy over olives
- Creekline
- Grassland
- Olive
- Arborea over grassland
- Horticulture







Metsulfuron-methyl (Brushoff)













SEED PRODUCTION









BIOLOGICAL
CONTROL?







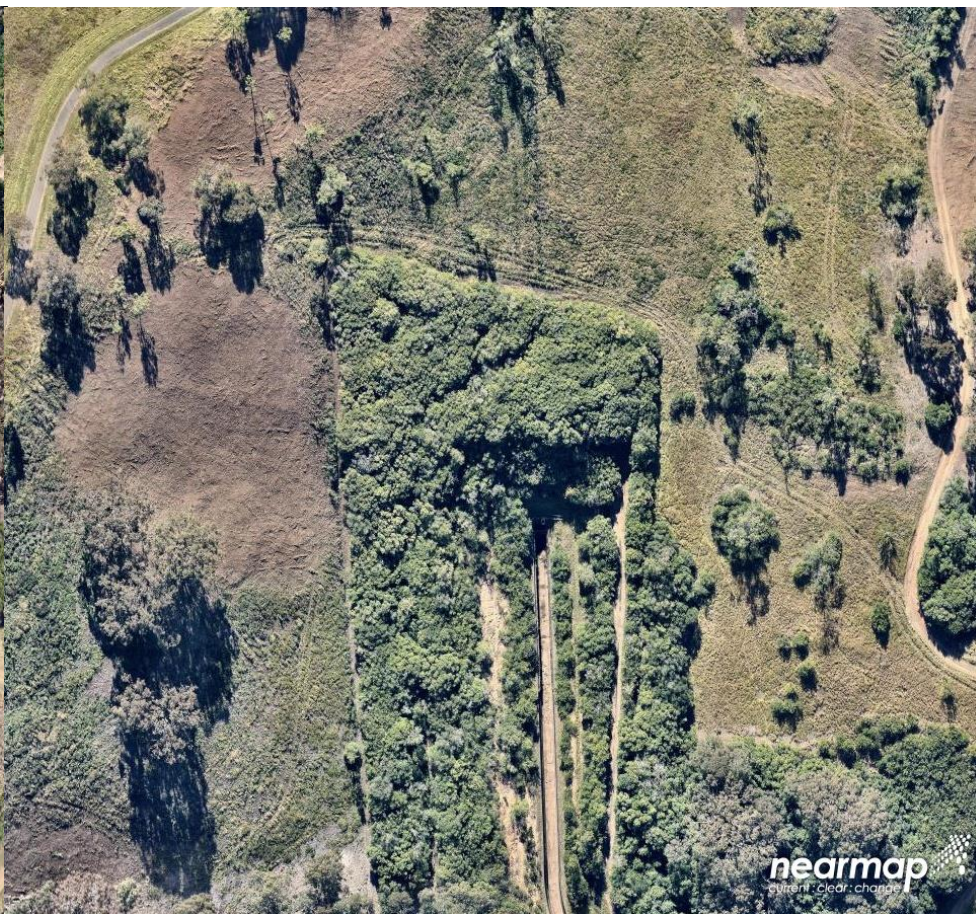








2014



2017







Acknowledgements:

Peter Cuneo – Manager Conservation & Restoration Research

Jordan Scott – Supervisor Natural Areas & Open Spaces

