

From Collections to Connections – *Connection with Community*

The role of botanic gardens nurseries beyond the
curated collections

Mandy
Thomson
Team Leader
Nursery

Royal Botanic
Gardens Victoria
Cranbourne



2017



Our Vision (20 year plan)

Life is sustained and enriched by plants



Our Mission

Every interaction
with us advances
the understanding
and appreciation of
plants



Pop-up Community Garden



BOX DIMENSIONS (1:400 @ A3)

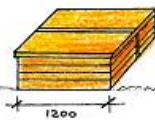
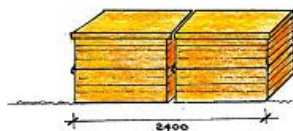
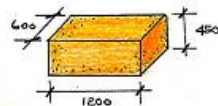


TABLE NOT TO SCALE

SEAT NOT TO SCALE

PROMENADE

MURDOCH

ELISABETH

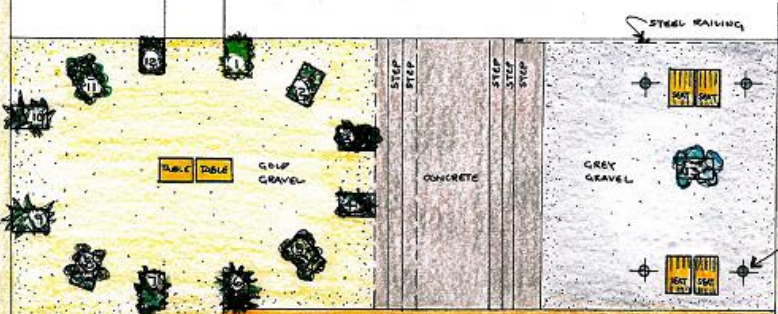
HOW TO

GARDEN

SHALE

BRIDGE

SHALE



PROMENADE

UPPER

SHALE

BRIDGE

SHALE

COMMUNITY POP UP GARDEN

DATE : JUNE 2014
SCALE : 1:100 @ A3
DESIGN : MANDY THOMSON & JILL BURNES



Themes

- Bird Attracting
- Unlikely Natives
- Colour
- Wildflowers
- Weird and Wonderful
- Smell
- Wattles
- Bush food
- Medicinal oils
- Formal Garden
- Touch
- Indigenous
- Kids Dig



We provided the plants



Planting days – a shared experience building community

- City of Casey Support Services
- Indigenous community Members
- Interactive gardening program clients





Individual attention with RBGV staff





Aboriginal Yarning Art Group



Community comments

Thank you for the experience, it was excellent, loved to plant out. I will keep an eye on my plant box. I learned a lot about the different plants. Thank you very much

Love everything about the garden. Love seeing all the flowers. Great!

Thank you for all the information on our plants. I had fun planting and sharing with your people and our friends.



Sustainable Gardening Program



Follow up visits

Lemon Myrtle tea

Potting up a plant to
take home

A ride on the Garden
Explorer around the Australian
Garden

An opportunity to see how the community garden is growing and meet new
friends





These boots were made for planting

Seasonal themed native plant displays Invite conversation with our volunteer tour guides



A Quirky Harvest



Connecting with the How To Garden



Fairy and Elf Gardens



Monash Aboriginal Healing Garden















July 2016



Vote for your favourite Kangaroo Paw!

<i>Angasanthus</i> 'Amber Velvet'	A. 'Anniversary Gold'
A. 'Big Red'	A. 'Bush Ballad'
A. 'Bush Blitz'	A. 'Bush Crystal'
A. 'Bush Endeavour'	A. 'Bush Fury'
A. 'Bush Inferno'	A. 'Bush Pearl'
A. 'Bush Ranger'	A. 'Bush Revolution'
A. 'Bush Tenacity'	A. 'Bush Volcano'
A. 'Clear Red'	A. 'Kings Park Federation Flame'
A. 'Landscape Lilac'	A. 'Landscape Lime'
A. 'Landscape Orange'	A. 'Landscape Pink'
A. 'Landscape Pink'	A. 'Landscape Red and Green'
A. 'Landscape Yellow'	A. 'Midas Touch'
A. 'Orange Cross'	A. 'Rampaging Rex Slaven'
A. 'Triple Treat'	A. 'Western Star Yellow Gem'
A. <i>gabriellae</i>	A. <i>manziesii</i> hybrid
A. <i>rubrus</i>	A. 'Royal Cheer'
A. (red form)	<i>Macranthus fuliginosus</i> 'Midnight'

Collect a pebble and cast your vote.

The most popular will be crowned the 'King' and 'Queen' Kangaroo Paw of the Kangaroo Paw Celebration on Sunday 20 November at 1.30 pm.



Volunteer program in the Nursery







Thank you

